

PRESTIGE COSMECEUTICALS



MEDICINE

PARTNER



SINCE 2011



# EW MEDICINE



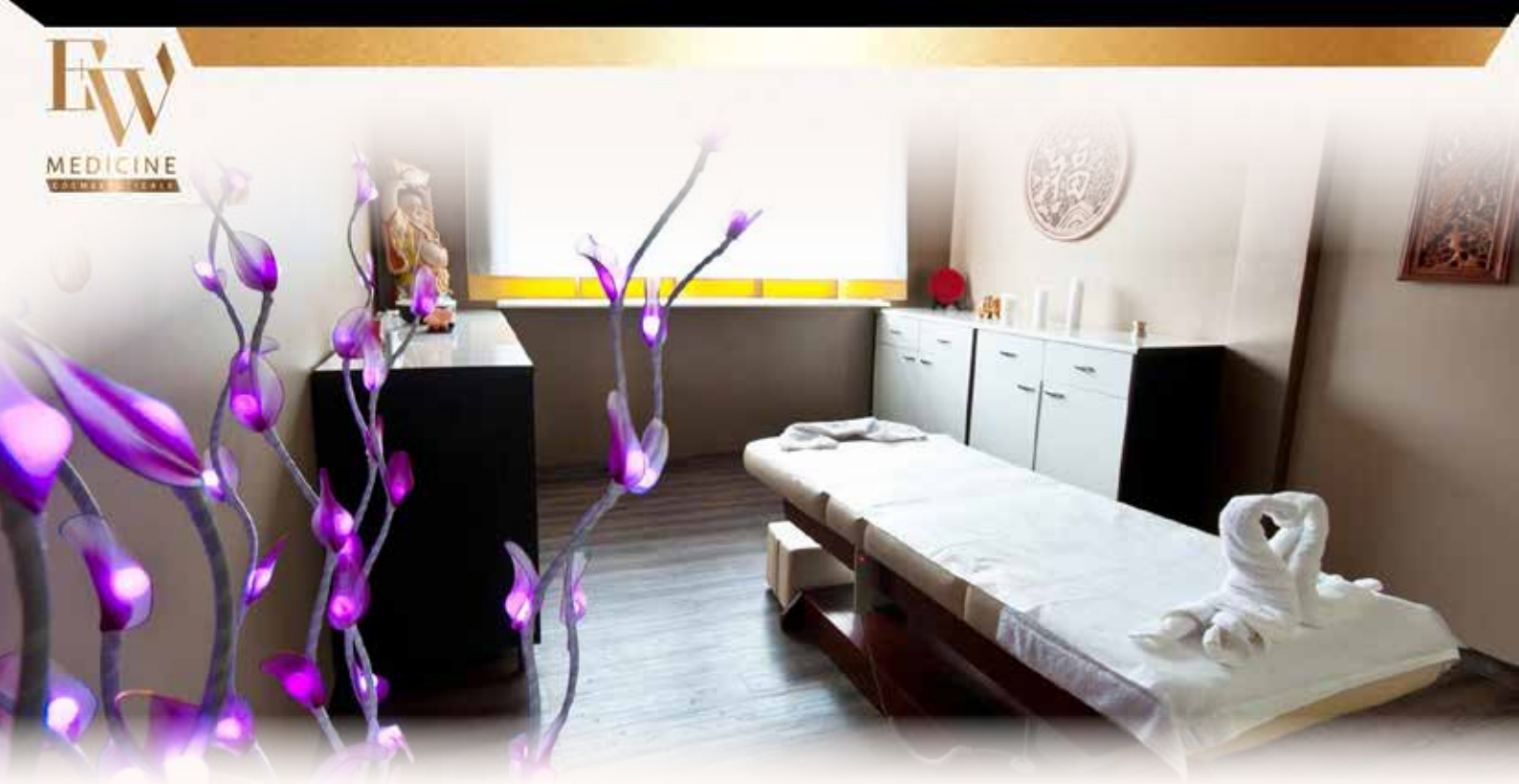
EW MEDICINE S.A. was established in 2011. The company's founder aim was to create a place where the synergy of conventional medicine and natural medicine will give the best healing results by using the most effective treatment forms – MERIDIAN Health and Rehabilitation Center. From the very beginning, the project was organized under prof. Józef Opara patronage. Prof. Józef Opara is an outstanding specialist in the field of neurology and medical rehabilitation. From 2014, rehabilitation treatments are being carried out under government contract with the Narodowy Fundusz Zdrowia (National Health Fund) and State Fund for



prof. Józef Opara







the Rehabilitation of the Disabled (PFRON).

MERIDIAN Health and Rehabilitation Centre is an institution providing physiotherapy sessions, massages and biological regeneration.

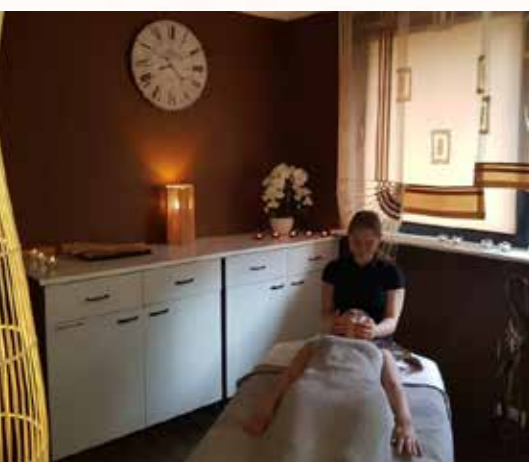
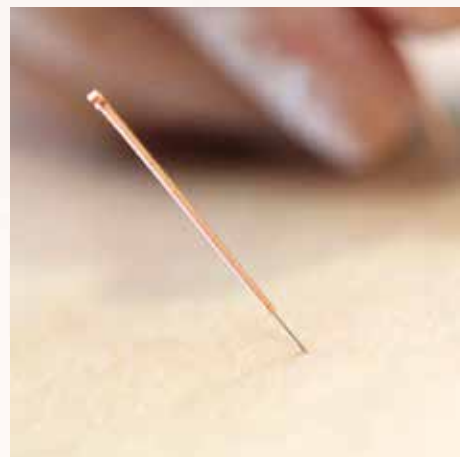
In MERIDIAN There is a possibility to carry out comprehensive diagnostics of the entire body, to explain complicated or unclear clinical cases and find the professional and effective assistance of qualified therapists.

In addition, we offer a wide range of wellness & SPA treatments.

We achieve the highest effectiveness through the cooperation of the best conventional medicine therapists with specialists in natural medicine.





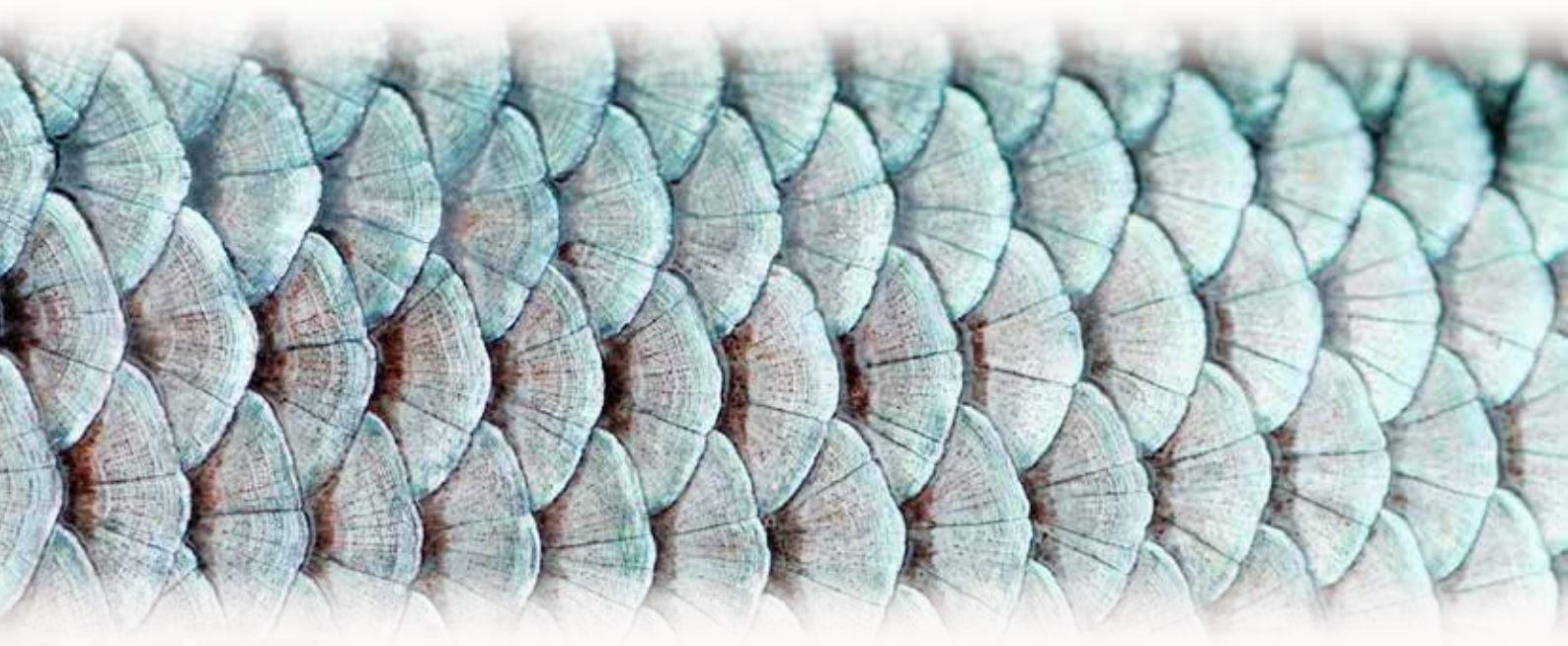






**WellU is a Swiss-Polish company that is active on the international markets. It is a producer and a distributor of innovative cosmetics.**

The brand which has been on a market for over 10 years is a pioneer in the cosmetic use of the fish collagen peptides, a world-unique substance of revolutionary achievements in the fields of regeneration and anti-ageing. WellU Scientific Council lead by prof. Andrzej Frydrychowski has developed and patented a method for extracting peptides from

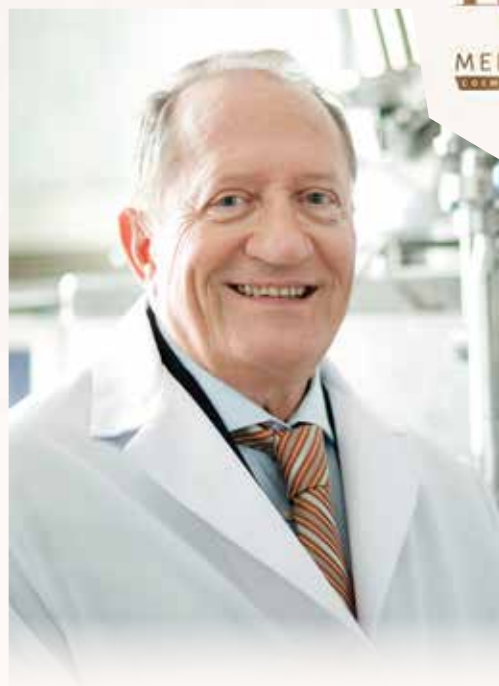


the skin of selected fish species. WellU being the owner of this patent has exclusive rights to use and develop it in the skin care products. This exclusiveness allows it to create completely unique and unmatched products, these include competitionless gel and serum based on the bioactive fish collagen peptides complex.

prof. MD, PhD

# ANDRZEJ FRYDRYCHOWSKI

[www.andrzejfrydrychowski.pl](http://www.andrzejfrydrychowski.pl)



- BRUSSELS EUREKA GOLD MEDAL
- YEARS OF REASEARCH ON CELL CULTURES

• **BIOPEPTIDE  
COMPLEX**

*I have started investigating the properties of peptides obtained from fish skin over 14 years ago. First results were based on obtaining collagen from a valuable source — the skin of selected fish species. During the process, we obtained so-called peptide and amino acid residues. Knowing the part that they play in the organism, we have isolated amino acids together with short peptide chains and increased their density numerous times. As a result of those works, we have developed a method of obtaining a bioactive extract called Biopeptide Complex.*

prof. MD, PhD, Andrzej Frydrychowski



Gold medal  
Brussels Eureka 1998  
Brussels, Belgium



Medal  
Maria - Curie  
Skłodowska



Gold Medal  
World Genius Convention  
2001 Tokio, Japan



Grand Prix  
Inpex 2001  
Pittsburgh, USA



Silver Medal  
Inpex 2001  
Pittsburgh, USA



Bronze Medal  
Inpex 2001  
Pittsburgh, USA



European  
Cooperation  
Institute  
Special Award



## Biopeptide Complex - a biologically active „bomb” of natural fish collagen peptides



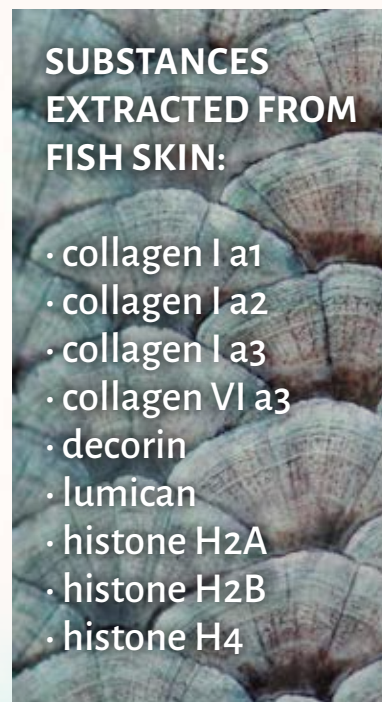
Peptides are organic chemical compounds that are formed by amino acid particles bound with a peptide bond.

- **oligopeptides** - short chains formed of few amino acids
- **polypeptides** - longer chains formed of 10 and more amino acids

Oligo - and polypeptides exhibit strong anti-ageing properties as they are responsible, i.a., for regulating cellular processes and intercellular communication, affecting significantly skin functioning

### SUBSTANCES EXTRACTED FROM FISH SKIN:

- collagen I a1
- collagen I a2
- collagen I a3
- collagen VI a3
- decorin
- lumican
- histone H2A
- histone H2B
- histone H4



### SILVER CARP

freshwater fish, algae, from  
organic breeding in Hungary



### ATLANTIC SALMON

exclusive sea fish from breeding  
with BIO certificate





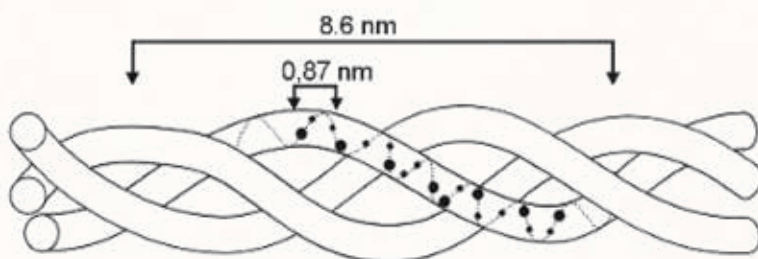
Fish peptides, especially those obtained from the fish skin with our unique method, exhibit species nonspecificity that allows them to affect human beings so greatly

*prof. Andrzej Frydrychowski*  
MD, PhD

## BIOACTIVITY

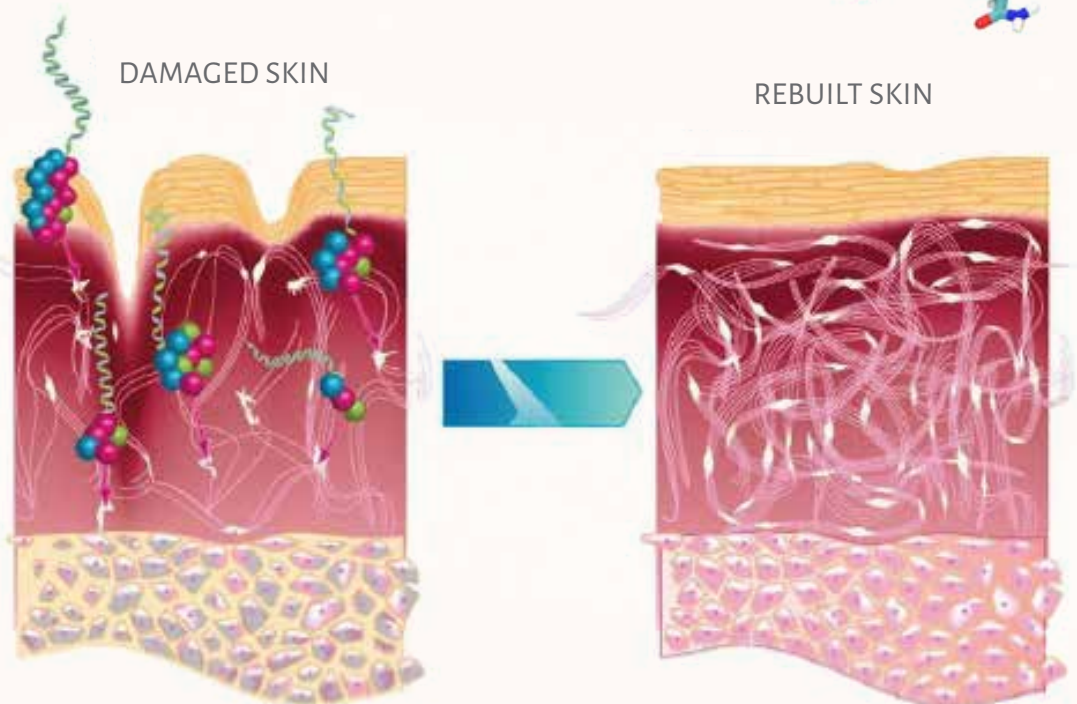
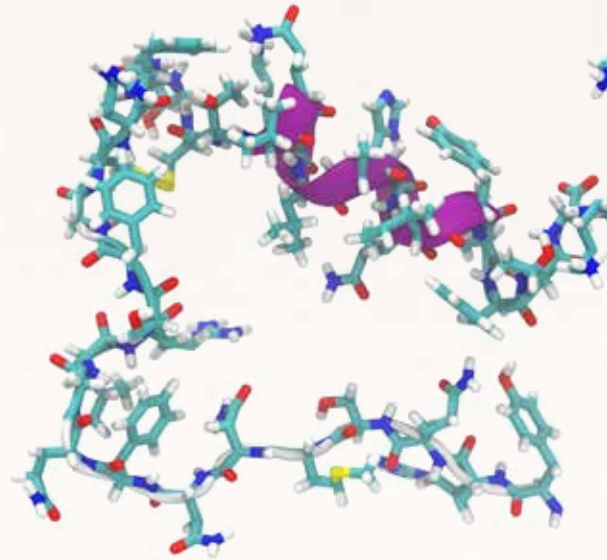
Patented technology known as „cold extraction” allows preserving the 3D structure of the peptide chains, thanks to which our products influence particular receptors in the human organism

**Collagen is the main building protein. Its components are peptides and amino acids**



# PEPTIDES

## PEPTIDES COSMETOLOGY AND MEDICINE FUTURE



### SIGNAL PEPTIDES

give a signal about the damage and outflow of collagen, by stimulating fibroblast activity to produce fibres supporting the skin: collagen and elastin.

### RELAXANT PEPTIDES

relax the muscles, which tension results in facial wrinkles, giving the Botox effect.

### CARRIER PEPTIDES

transfer active substances into the skin, so that restoration and regeneration reaches the source of ailments



# NUTRIVI WATER

## — A BRILLIANT CARRIER

NUTRIVI WATER – a brilliant carrier, organized, thanks to special generators, into hexagonal structures. The use of Nutrivri water in products stands as an example of a perfect synergy with all the remaining ingredients, Biopeptide Complex included. Being a perfect carrier, it allows the skin to almost completely absorb active and nourishing substances contained in the cosmeceuticals, strengthening and nurturing the skin to a much greater extent. It has an enormous ability to penetrate every, even damaged skin cells. It provides intense hydration, stimulates regeneration of damaged structures, strengthens natural defense mechanisms and soothes irritations. It's produced thanks to generators that are an incredible invention, capable of changing water structure.



# BECOLL

LUXURIOUS

*Amber*

The amber line is a rich range of products based on exceptionally valuable succinic acid, acting as a biostimulator. It is an extremely potent component in the fight against signs of aging. In addition, it also has disinfecting and anti-rheumatic properties and can soothe the effects of burns. Day and night creams are perfect for dry and dehydrated skin, and even skin prone to irritation. Regular use of these products will contribute to better cellular metabolism, faster regeneration of the skin, and improved microcirculation, so that the skin will be oxygenated, nourished, moisturized and brightened (because one of the many properties of succinic acid is whitening). The body lotion deeply moisturizes and nourishes the skin, significantly improving its condition. In addition, it will alleviate the effects of irritation. The body scrub included in the line contains a natural amber abrasive that perfectly cleans and improves the skin tone, stimulates microcirculation and makes the skin smooth and moisturized. Finally, the whitening serum - the skin will become radiant and full of light, and the combination of succinic acid and vitamin C will be an effective antidote to fight its discoloration.



MOISTURIZING  
BODY LOTION



WHITENING  
SERUM



BODY  
PEELING



DAY  
CREAM



NIGHT  
CREAM



# BECOLL

## LUXURIOUS *Silver*

The silver line was created on the basis of silver, which shows, among others, anti-inflammatory and regenerating properties, supports the reconstruction of soft tissues and improves the body's overall immunity, and even has astringent and normalizing properties - regenerates and moisturizes the skin, as well as soothes irritations. It's the right line of cosmetics for all skin types, and is especially recommended for acne skin. This line also includes day and night creams, and a body lotion with the difference that the whole was based on silver (unlike the amber line, based on succinic acid). In the whitening serum, silver particles were used to make the skin radiant and full of light. In addition, the line also features a peptide hair and body serum based on a unique peptide complex. This product strongly nourishes and regenerates, and also provides long-lasting protection against external factors.



# BECOLL

LUXURIOUS



Unique selection of products created in two lines: AMBER and SILVER. In each of them, we offer a protective day cream, a regenerating night cream, a moisturizing body lotion, an exclusive whitening serum and, in the case of an amber line, a fine-grained body scrub, and the peptide serum in the silver line. It is worth noting that both lines contain vitamin C in their products, thanks to which these cosmetics also have a whitening function - they are an effective tool in the fight against all kinds of discolorations.





## DAY CREAM

Protective day cream with UV filters - with a light texture, does not clog pores, absorbs excess serum and leaves an invisible film on the skin. The stabilized form of vitamin C contained in it provides a significant anti-aging effect. In addition, squalene properly strengthens the epidermal barrier and effectively nourishes the skin, while vitamin E, called the vitamin of youth, restores the skin's natural glow. A rich set of three extracts: from the root of Angelica acutiloba, which delays anti-aging processes; Aloe Vera is soothing and moisturizing for demanding skin and Mexican Agastache mexicana, reduces redness and effects of psychological stress on the skin.

## NIGHT CREAM

Regenerating night cream - the skin is firmer and better nourished. A recipe based on squalene, which naturally strengthens the epidermis and almond oil providing deep hydration and nutrition. In addition, the contained stabilized form of vitamin C has an anti-aging effect and gives the skin a natural glow. Pigment clearly smoothens wrinkles, shows high absorption of sebum, and aloe Vera extract and d-panthenol have a soothing and moisturizing effect. In addition, the sodium salt of hyaluronic acid has a positive effect on the improvement of the condition of dry and tired skin, and the root extract from Angelica acutiloba delays the aging processes.





## MOISTURIZING BODY LOTION

Moisturizing body lotion restores natural softness to the skin and makes it more nourished and moisturized. The rich formula strengthens the natural lipid barrier of the skin and protects against free radicals. Included almond oil has a rich moisturizing, nourishing and anti-aging effects. It also improves blood circulation. The acids, mainly oleic and linoleic acids, as well as vitamins (A, B, D, E) highly soften the skin and contribute to the strengthening of the protective barrier of the epidermis. The rice oil is a rich source of vitamin E and gamma-oryzanol, which makes the skin firmer. The included phytosterols strengthen the epidermis, moisturizing and protecting against water loss. The body lotion deeply penetrates the layers of skin unreachable to other components. The lotion also contains an extract of *Nannochloropsis oculata* microalgae which has a strongly lifting effect - it immediately tightens the skin and makes it firmer. This component also stimulates the synthesis of collagen, which gives long-lasting firming benefits. The whole ingredient is also complemented by the ingredient obtained from the *Imperata Cylindrica* plant - a very rich source of vitamin K preventing the loss of water from the body and allowing a long-lasting feeling of moisturizing the skin and silk proteins that make the skin soft and velvety.



## BODY SCRUB

Fine-grained body scrub based on natural, energizing amber, which gently removes dead skin while restoring smoothness and velvet to the skin. Amber scraps rubbed against the skin, have an energizing effect, stimulating metabolism and adding radiance to the skin and improving its color. The active formula has been additionally enriched with shea butter esters with a moisturizing effect.





## EXCLUSIVE SERUM

Exclusive serum for care of dry and dehydrated skin, prone to irritation. A complex of concentrated amber extracts improves cellular metabolism, supports the natural defense mechanisms of the skin, accelerates its ability to regenerate, improves microcirculation. In addition, the contained L-arginine makes the product strongly moisturizing to the skin, not only strengthening the lipid layer of the epidermis, but also by penetrating into its deeper layers helps retain water in them and has a soothing and firming effect on the skin. The gold particles contained in the serum (amber line) or the silver particles (silver line) will make the complexion radiant and full of light.



## PEPTIDE SERUM

Excellent peptide serum for body and hair that will nourish and regenerate dry and tired skin, prone to irritation. The unique peptide complex contained in it will provide immediate and long-lasting hydration. Biotin (beauty vitamin) will take care of healthy skin, hair and nails. Vitamin C perfectly nourishes, evenness and oxygenated skin, while the included silver will alleviate any irritation, and will also contribute to the preservation of young and firm skin.



# THE BIOPEPTIDE COMPLEX'S RESULTS

## COSMETOLOGY AND DERMATOLOGY

Cosmetic and dermatological results after 3 months treatment with the Biopeptide Complex products.



Hands with Atopic Dermatitis (AD) after 1 week of Biopeptide Complex treatment.



Skin irritated after low level laser therapy – 1 day after the use of Biopeptide Complex products.





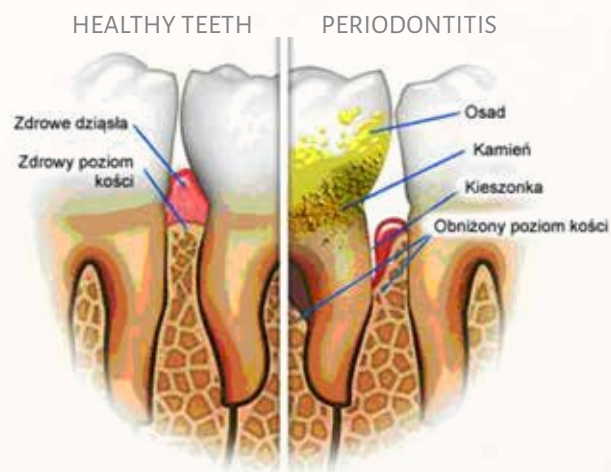
## REHABILITATION / REGENERATION

Patient after removal of the heel osteosynthesis material – post-surgical wound, 6 weeks of treatment with Biopeptide Complex.



## STOMATOLOGY

Patient using Biopeptide Complex after dental treatment 2, 3 and 9 days after the treatment







MEDICINE

PARTNER



PRESTIGE COSMECEUTICALS